

Meet Dr. Koo and Dr. Martinez

With more than 20 years of experience, Dr. Kim Eng Koo is a board-certified neurosurgeon. An honors graduate of Temple University School of Medicine, she completed her residency at Thomas Jefferson University Hospital in Philadelphia.



Dr. Koo is a member of the American Association of Neurological Surgeons, the Congress of Neurosurgeons, the American College of Surgery and the Alpha Omega Alpha Medical Society.

Dr. Martinez, a board-certified neurosurgeon, joins Dr. Kim Eng Koo at Nash Neurosurgery. Dr. Martinez completed his medical studies at the Universidad Complutense in Madrid, Spain, and his internship at Bridgeport Hospital in Bridgeport, Connecticut. He completed his general surgery residency requirements at Albert Einstein Medical Center in Philadelphia and his neurological surgery residency at Hahnemann Medical College and Hospital, also in Philadelphia.



After residency, Dr. Martinez joined the faculty of Thomas Jefferson University Hospital in Philadelphia where he was an instructor and assistant professor for four and a half years.

In 1980, Dr. Martinez joined the staff of Nash General Hospital. He was the first neurosurgeon to practice in Nash, Edgecombe and Halifax counties. He served as President of the Medical Staff of Nash Health Care in 2000 and 2001.

Location

Our office is located at 2412 Professional Drive, just off North Winstead Avenue Rocky Mount, NC.

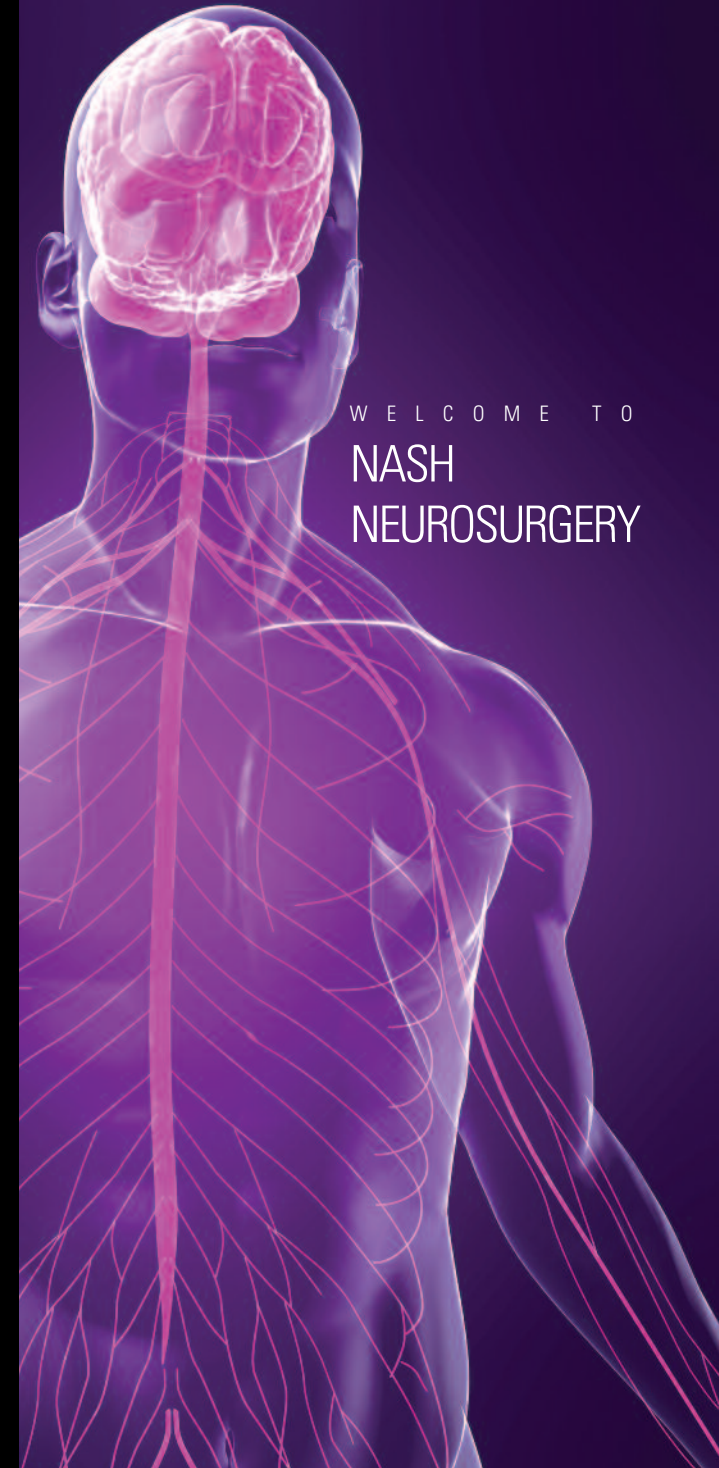


Nash Neurosurgery

A subsidiary of Nash Health Care

"It's all about how we treat you."

www.nhcs.org



WELCOME TO
NASH
NEUROSURGERY

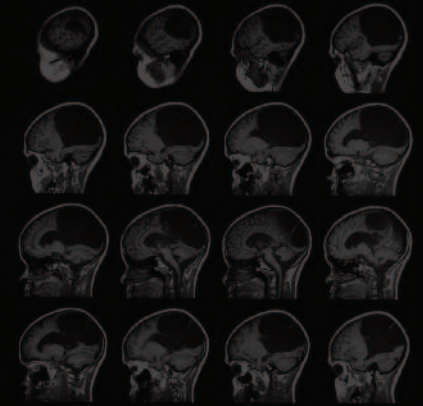
About Nash Neurosurgery

Nash Neurosurgery specializes in treating both cervical and lumbar (spine and back) disorders and injuries, brain surgery and peripheral nerve disorders (like carpal tunnel).

Dr. Koo and Dr. Martinez maintain full medical staff privileges at Nash Health Care, which hosts a state-of-the-art surgery pavilion, completed in 2004. For added convenience, we also offer outpatient surgery at the Nash Day Hospital. This innovative and technologically advanced facility is designed specifically for outpatient and ambulatory surgery. It was one of the first in the nation, serving patients since 1984.

What to bring to your first visit:

- ◆ Bring medical records from other physicians who have treated you for your current condition.
- ◆ Any X-rays, MRIs and/or test results for your current condition.
- ◆ A list of all medications you are currently taking.
- ◆ All medical insurance cards, including Medicare and Medicaid.
- ◆ An insurance authorization or written referral from your primary care doctor, if required by your insurance company.
- ◆ A completed new patient form. If it is not possible to complete this prior to your appointment, please arrive about 15 minutes early to fill out this information. A form will be sent to you in the mail if you call in advance.



Payment

We participate with most insurance plans. You should contact your insurance provider to determine if our services are covered. Patients are required to pay insurance deductibles and co-payments at the time of an office visit when services are rendered. Our Practice Coordinator, who may be reached at 252-962-5500, will assist you.

Prescription refills

If you need prescription refills, you should call the office at 252-962-5500 on weekdays between 9:00 am. and 4:00 pm. You may need to leave a message.